

# Arch Environmental Equipment, Inc.

## Chute Baffle Strip Curtain

### INSTALLATION INSTRUCTIONS

TOOLS NEEDED:  
ADJUSTABLE WRENCH OR SOCKET WRENCH FOR ½" HEX (5/16-18 BOLT)  
TAPE MEASURE OR EQUIVALENT (OPTIONAL)  
CUTTING TOOL (if mounting along length of chute)  
WELDER

***SHUT DOWN AND LOCKOUT CONVEYOR BEFORE PERFORMING ANY MAINTENANCE***

#### **STEP 1**

Make sure the chute baffle is the same width as the load chute. If not, stop here and call the factory.

#### **STEP 2**

Now, determine where you want to install the baffle. It can be installed either on the end of the loading chute (doghouse) or somewhere along its length. If installing on the end of the chute, skip to step 6.

#### **STEP 3**

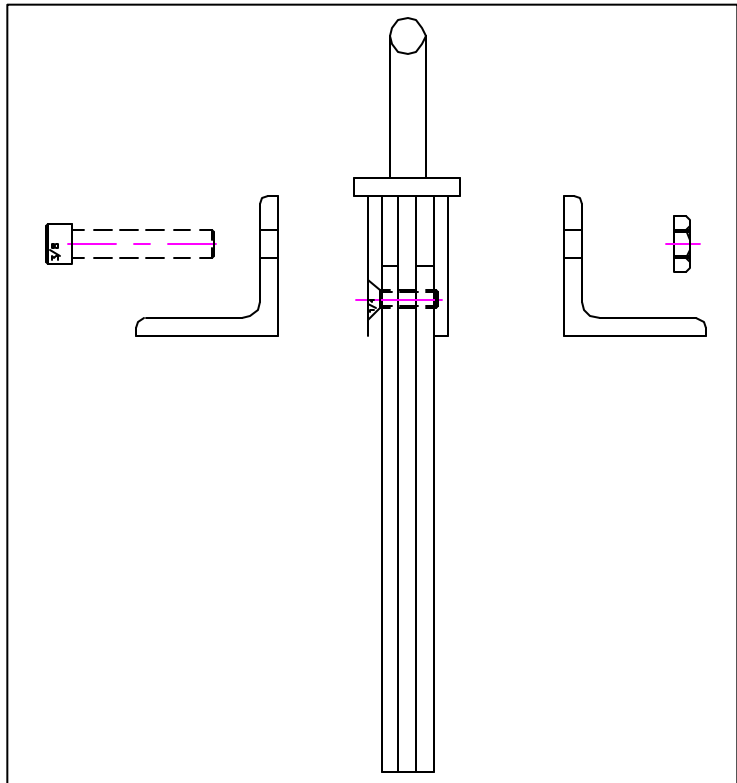
Once you have determined the location where you want the baffle installed, mark two lines approximately 1 ¼" apart across the top of the hood of the load chute. The lines will represent where you slot will be cut so the curtain portion can hang down into the load chute. Check your dimensions and cut along to two lines to form a slot in hood of the load chute.

#### **STEP 4**

Locate the Chute Baffle assembly on the end of the load chute so that one of the mounting angle lies flat on the top of the hood. Now tack-weld the angle in place on the hood.

#### **STEP 5**

Next slide the curtain assembly into the slot, so the two angles lie flat on the hood of the load chute. Now, tack-weld the angles to the hood. Skip to step 7.



### **STEP 6**

Locate the Chute Baffle assembly on the end of the load chute so that one of the mounting angles lies flat on the top of the hood. Now tack-weld the angle in place on the hood. At this point, trim the urethane strips and bristle insert to match the conveyor profile.

### **STEP 7**

Remove the 5/16" bolts from the assembly and remove the Baffle insert from the mount angle(s). Stitch weld the mounting angles to the hood as required. Note: be sure to remove the urethane baffle insert, as it can melt due to excess heat. Note: DO NOT remove the ¼" bolts in the baffle insert.

### **STEP 8**

Reinstall the Baffle insert using the 5/16" bolt previously removed. If needed, do a final trim of the urethane strips and bristles to match the profile of the belt..



P.O. Box 1760 5929 Benton Road Paducah, KY 42002-1760  
1-800-553-4567 / 270-898-6821 Fax: 1-800-230-9462 / 270-898-8061  
<http://www.aeec.com>