

*Who is Arch
Environmental?*

*manufacturer and worldwide distributor of preferred bulk conveyor components since 1975

Mechanical Division

Belt Cleaners•Belt Alignment•Sealing Systems•Dust Control Systems•Impact/Slider Systems

Electrical Division

Belt Scales•Metal Detectors•Pull Cord Switches•Belt Protection Devices•Conveyor Control Systems

*facilities include a fabrication shop, a CNC machine shop, and state-of-the-art urethane production



ARCHWEIGH SC® BELT SCALE

- | | |
|---------------------|---|
| EZ Installation | ✓ |
| Low Maintenance | ✓ |
| Corrosion Resistant | ✓ |
| Fast Delivery | ✓ |
| Worksheet Req'd | ✓ |

Patented ArchWeigh® dual load cells assure accuracies of +/- 1-2% by automatically zeroing out the effects of the idlers movement.

Speed unit precisely measures belt speed. Internal housing means once the scale is installed, so is the speed unit.

Oversized junction box for field connections.

Reinforced, factory balanced and leveled frame eliminates the common problems associated with insufficient structure.

(Conveying Confidence from Tail to Head)



ARCH
ENVIRONMENTAL
EQUIPMENT, INC.

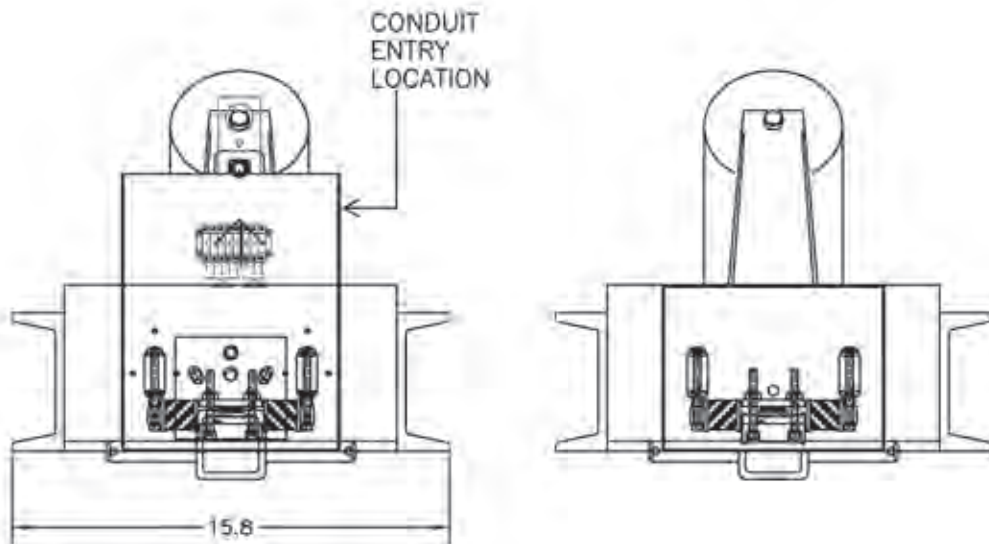
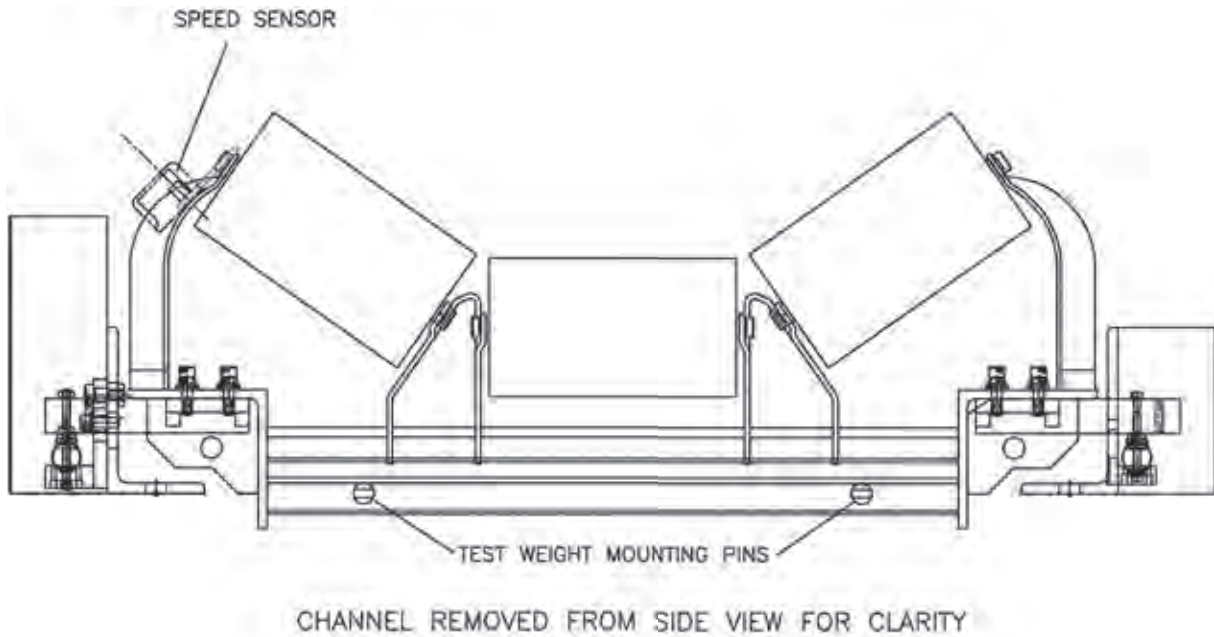
CONVEYOR EFFICIENCY SPECIALISTS

800-553-4567

www.archenv.com



ARCHWEIGH SC[®] BELT SCALE



Scale Idler
 Bearings: Sealed Ball
 Specifications: CEMA

Load Cells
 Quantity: 2 double-ended shear beams
 (4 total load cells)
 Excitation: 10DVC
 Output: 3 mV/V (+/- .25%)
 Non-linearity (FSO): <0.03%
 Non-repeatability (FSO): <0.03%
 Hysteresis (FSO): <0.05%

Speed Sensor
 Type: Hall Effect
 Mounting: Outboard Wing Roll
 Voltage: 24 VDC
 Output: 20 mA



Covered under one or more of the following patents:
 4,202,437;4,231,471;4,436,446;4,489,823;4,533,036;4,779,716;4,877,125;
 4,989,727;5,149,305;5,222,588;5,222,589;5,219,063;5,350,053;5,725,083
 other patents pending

Note: If available, prices vary with options.