

*Who is Arch
Environmental?*

*manufacturer and worldwide
distributor of preferred bulk
conveyor components since 1975

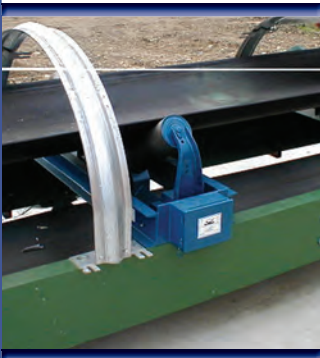
Mechanical Division

***Belt Cleaners•Belt
Alignment•Sealing
Systems•Dust Control
Systems•Impact/Slider Systems***

Electrical Division

***Belt Scales•Metal Detectors
•Pull Cord Switches•Belt
Protection Devices
•Conveyor Control Systems***

*facilities include a fabrication
shop, a CNC machine shop, and
state-of-the-art urethane
production



ArchWeigh HP® Belt
Scales provide long-term
repeatability without
recalibration.

Accurately measures *only*
material on the belt and
eliminates the force of the
moving belt.

A *complete scale carriage*, not a
'do-it-yourself' kit.

Unique dual load cell design
allows for a
positive/negative response to
account for normal conveyor
variance.

Unitized bridge
construction and internal
speed sensor allow
for one time
'Bolt-in-Place' installation.

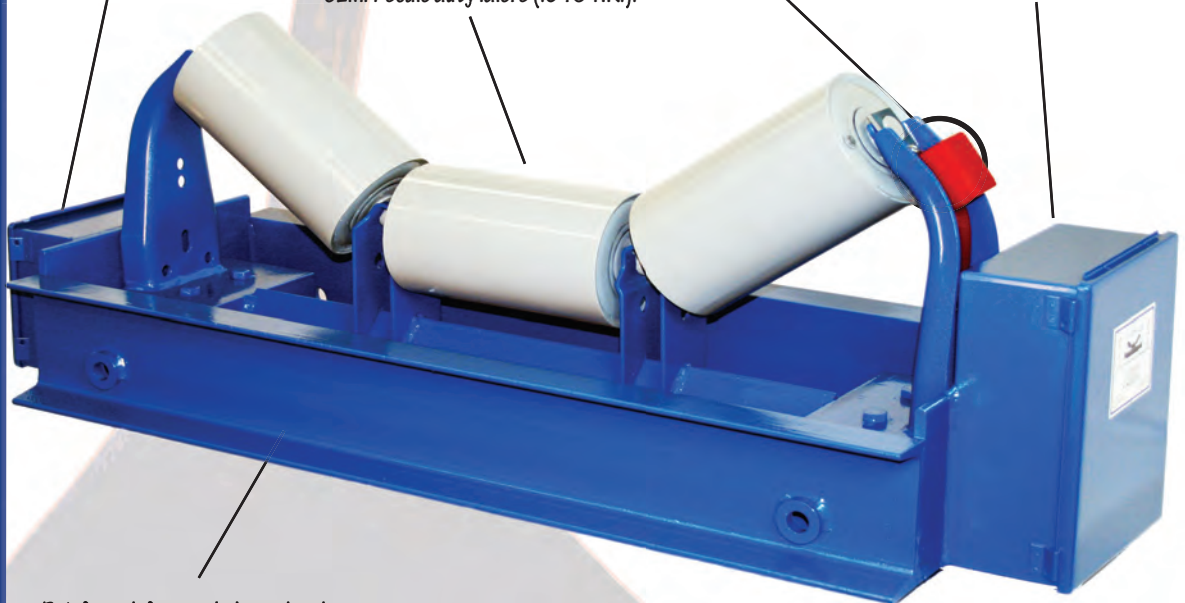
ARCHWEIGH HP® BELT SCALE

Patented ArchWeigh® dual
load cells assure accuracies of
+/- .5% by automatically
zeroing out the effects of the
idlers movement.

Speed unit precisely
measures belt speed. Internal
housing means once the scale
is installed, so is the speed
unit.

CEMA scale duty idlers (.015 TIR.).

Oversized junction box for field
connections.



Reinforced, factory balanced and
leveled frame eliminates common
problems associated with insuf-
ficient structure.

EZ Installation ✓
Low Maintenance ✓
Super Heavy-Duty ✓
Fast Delivery ✓
Worksheet Req'd ✓

ARCH
ENVIRONMENTAL
EQUIPMENT, INC.

CONVEYOR EFFICIENCY SPECIALISTS

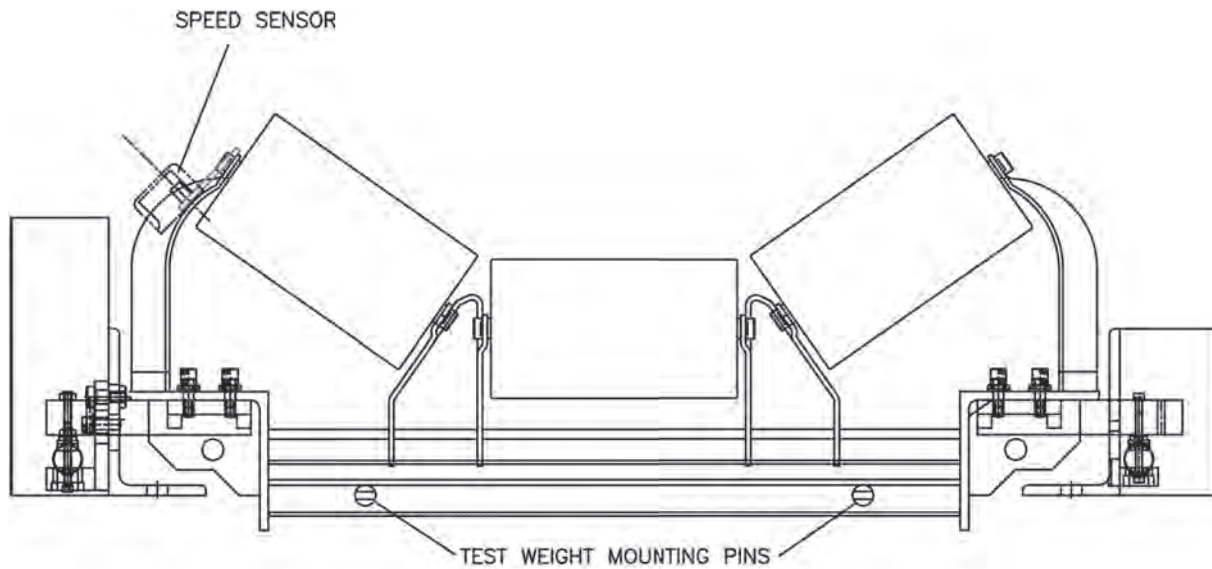
800-553-4567

www.archenv.com

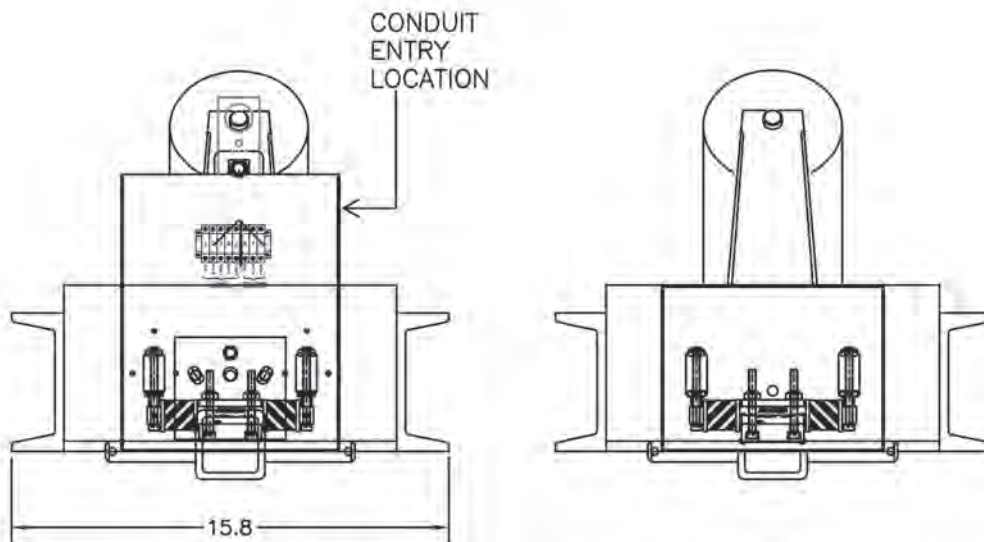
(Conveying Confidence)



ARCHWEIGH HP[®] BELT SCALE



CHANNEL REMOVED FROM SIDE VIEW FOR CLARITY



Scale Idler

Roll Tolerance: 0.015 in. TIR
Bearings: Sealed Ball
Specifications: CEMA

Load Cells

Quantity: 2 double-ended shear beams
(4 total load cells)
Excitation: 10DVC
Output: 3 mV/V (+/- .25%)
Non-linearity (FSO): <0.03%
Non-repeatability (FSO): <0.03%
Hysteresis (FSO): <0.05%

Speed Sensor

Type: Hall Effect
Mounting: Outboard Wing Roll
Voltage: 24 VDC
Output: 20 mA



Covered under one or more of the following patents:
4,202,437; 4,231,471; 4,436,446; 4,489,823; 4,533,036; 4,779,716; 4,877,125;
4,989,727; 5,149,305; 5,222,588; 5,222,589; 5,219,063; 5,350,053; 5,725,083;
other patents pending

Note: If available, prices vary with options.