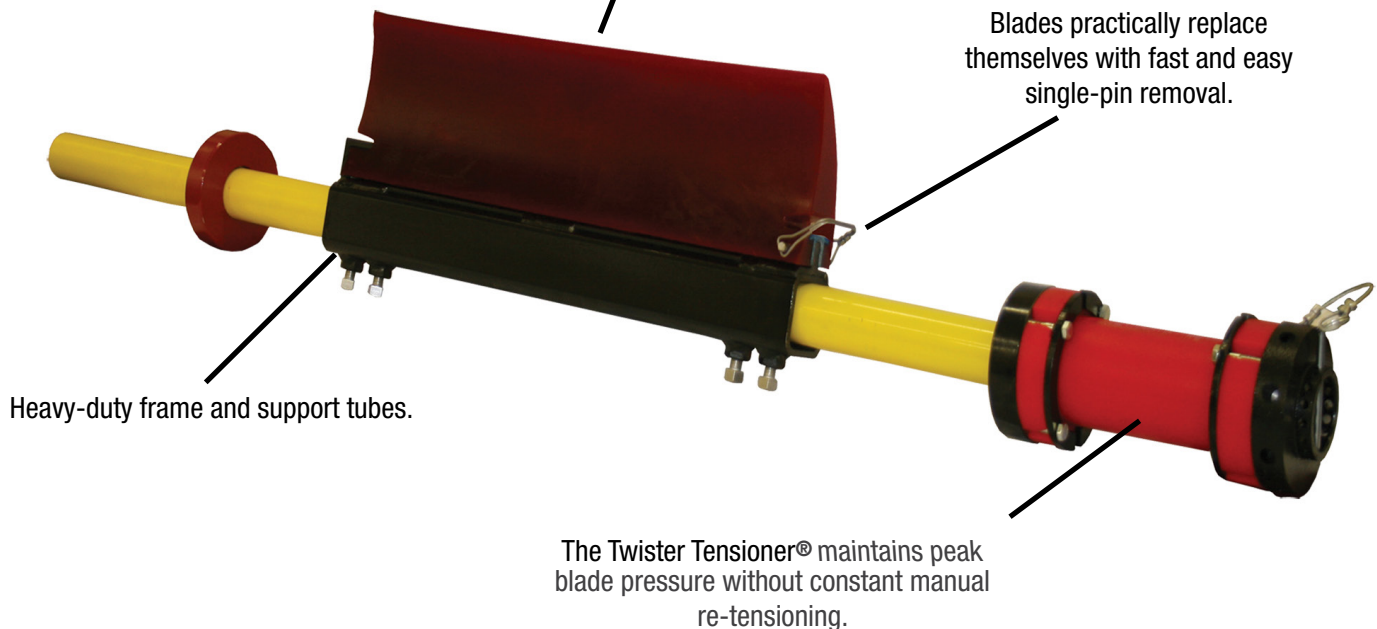
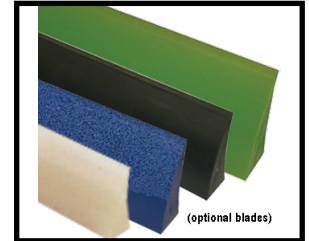


SABER® PRIMARY CLEANER

- ✓ Simple Installation
- ✓ Low Maintenance
- ✓ Fast Delivery
- ✓ Heavy-Duty

Single-piece polyurethane blade is unforgiving to harmful carryback, but equally gentle on mechanical splices.



- Patented *Twister Tensioner*® maintains constant blade-to-belt pressure and its core is **GUARANTEED FOR LIFE!**
- Compact mounting dimensions (only 4 1/2") for all conveyors.
- Reduces costs associated with conveyor wear-and-tear and spillage cleanup.
- Curved blade aggressively attacks stubborn carryback and is safe for mechanical splices.
- No need for constant re-tensioning.
- Multiple blade options include high temperature, high moisture, and food grade.



WHO IS ARCH ENVIRONMENTAL?

Manufacturer and worldwide distributor of preferred bulk conveyor components since 1975.



800.553.4567 www.archenv.com

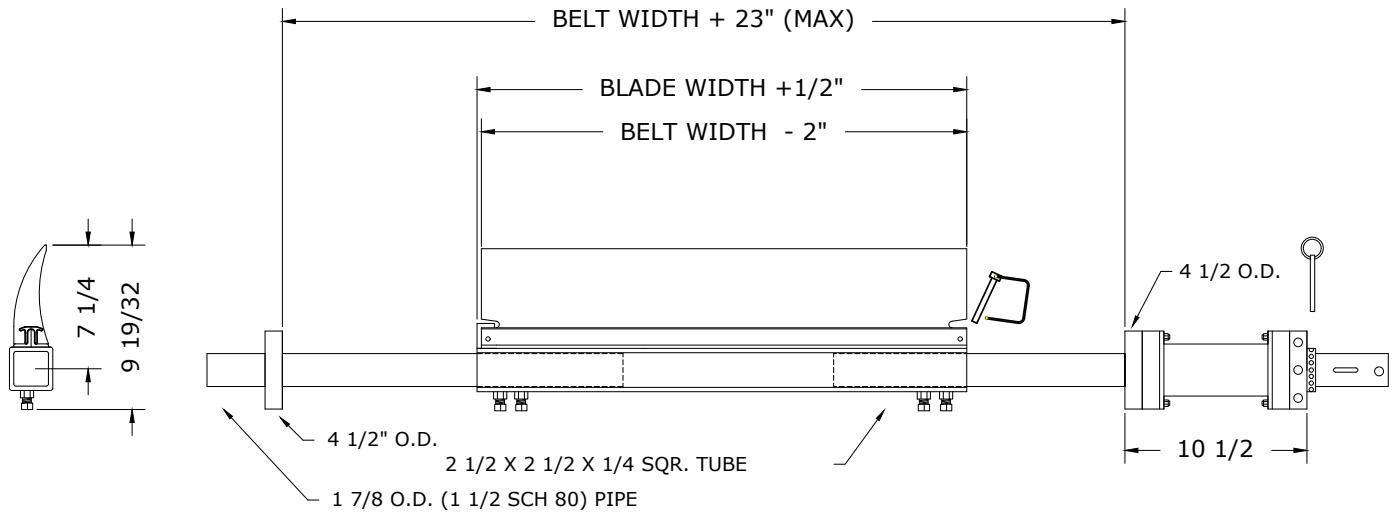
MECHANICAL DIVISION

Belt Cleaners • Belt Alignment • Sealing Systems
Dust Control Systems • Impact/Slider Systems

ELECTRICAL DIVISION

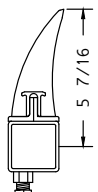
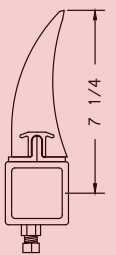
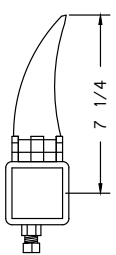
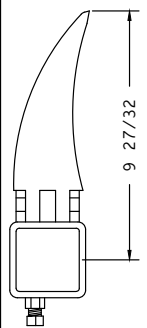
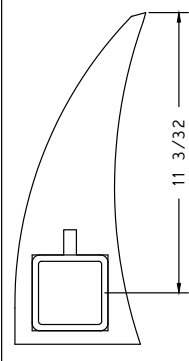
Belt Scales • Metal Detectors • Pull Cord Switches
Belt Protection Devices • Conveyor Control Systems

SABER® PRIMARY CLEANER



NOTE: IF LONGER SPAN IS REQUIRED, A LONGER MAINFRAME WILL BE REQUIRED. (CONSULT FACTORY FOR DETAILS)

BELT CLEANER SELECTION GUIDE

| PULLEY DIAMETER | | | | | |
|--------------------------|--|---|--|---|---|
| 24"+ [609mm +] | | | | | |
| 16"-36" [406mm-914mm] | | | | | |
| 4"-16" [101mm-406mm] | | | | | |
| | | | | | |
| | 48" MAX  MINI |  SB |  SCM |  MX |  XS |
| BELT SPEED | | | | | |
| 0-450 FPM [0-2.3m/s] | | | | | |
| 450 FPM + [2.3m/s +] | | | | | |

Standard Blades (RED)

Temp Range: 180-220 F

High-Moisture Blades (GRAY)

Temp Range: 180-220 F

15%+ Moisture Content

Cermic Blades (BLUE)

High Friction/High Speed

750+ ft/min.

High Temperature Blades (GREEN)

Temp Range: Up to 300 F

Non-Pigment Blade (NATURAL)

Same as Standard Red Blades

Ideal for color sensitive materials

Food Grade (WHITE)

FDA approved for mild contact
with food products.

Covered under one or more of the following patents:
4,202,437;4,231,471;4,436,446;4,489,823;4,533,036;4,779,716;4,877,125;
4,989,727;5,149,305;5,222,588;5,222,589;5,219,063;5,350,053;5,725,083
other patents pending



Note: If available, prices vary with options.