

# CTS® PULL CORD SWITCHES

- ✓ Simple Installation
- ✓ Low Maintenance
- ✓ Corrosion Resistant
- ✓ Fast Delivery



## CTS 100

### Standard Switch

- Self-Wiping Rotary Switch (not a micro switch)
- Isolated Mechanical & Electrical Sections
- Heavy-Duty Pulling Mechanism (eliminates false trips)
- Corrosion-Proof Construction



## CTS 200

### Standard Switch with Trip Light

- Includes CTS 100 Features
- 15 Watt Trip indication Light
- Non-Hazardous Locations Only



## CTS 300

### Switch with Pre-Start Alarm

- Includes CTS 100 Features
- Audible and Visual Pre-Start Alarms
- Trip Indication LEDs
- For Hazardous and Non-Hazardous Locations
- Available Pre-Start Alarms with Speech Communications and Carbon Monoxide Monitoring



- All CTS Pull Cord Switches allow a facility to stop a conveyor anywhere along a conveyor.
- CTS switches can be operated manually with knob on switch cover (pad-lockable in 'off' position) or with pull cord.
- Once OFF, switches must be manually reset to restart conveyor.
- Recommended installation distance between switches is 330'.
- Electrical switch is a rotary-type, self-wiping action with 2 normally open and 2 normally closed contacts.
- Other Specs: Enclosure rated at I.P. 66, impact resistant, and made of High-Impact Polycarbonate.
- Switch is rated at 16A / 500V (CSA-10A at 500V)
- Stainless Steel Hardware



## WHO IS ARCH ENVIRONMENTAL?

Manufacturer and worldwide distributor of preferred bulk conveyor components since 1975.



800.553.4567 [www.archenv.com](http://www.archenv.com)

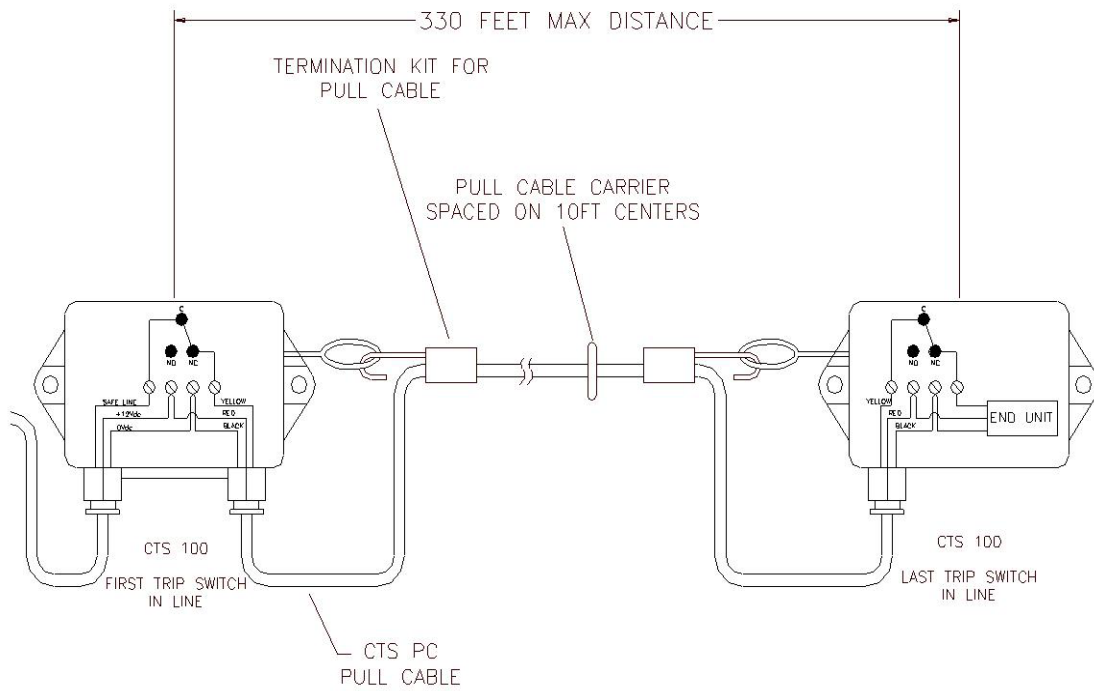
## MECHANICAL DIVISION

Belt Cleaners • Belt Alignment • Sealing Systems  
Dust Control Systems • Impact/Slider Systems

## ELECTRICAL DIVISION

Belt Scales • Metal Detectors • Pull Cord Switches  
Belt Protection Devices • Conveyor Control Systems

# CTS® PULL CORD SWITCHES



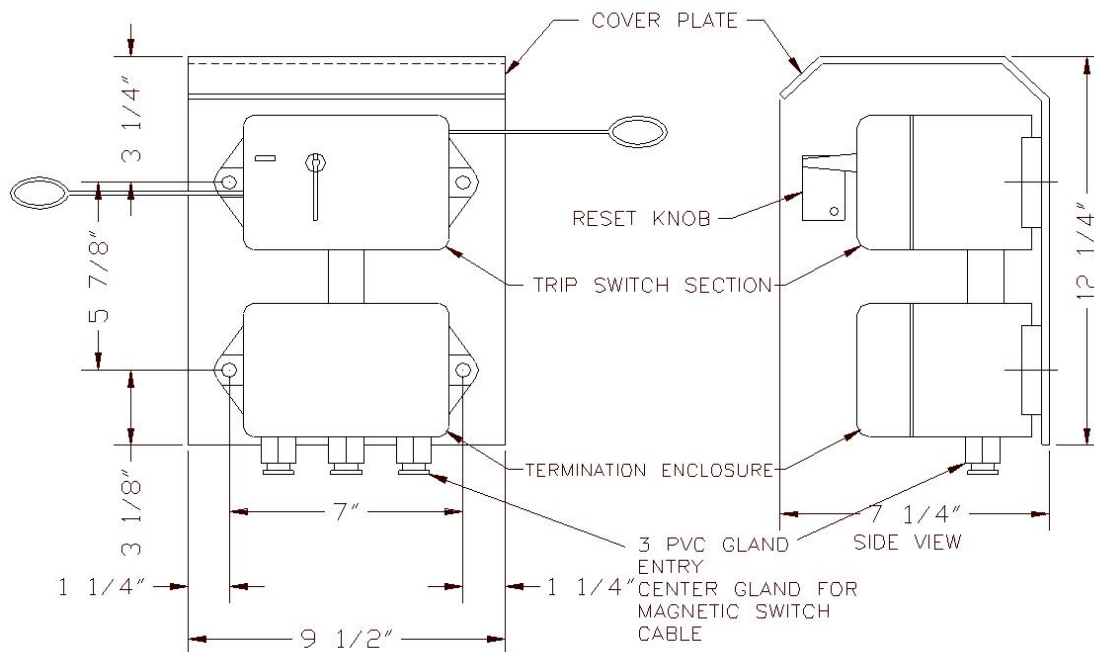
## Specifications

**Enclosure:** I.P. 66 and DIP

**Housing:** High Impact Polycarbonate

**Switch:** Rated 16A at 500V standard/10A at 500V-CSA, (2 normally open and 2 normally closed contacts)

**Hardware:** 316 Stainless Steel



Covered under one or more of the following patents:  
 4,202,437;4,231,471;4,436,446;4,489,823;4,533,036;4,779,716;4,877,125;  
 4,989,727;5,149,305;5,222,588;5,222,589;5,219,063;5,350,053;5,725,083  
 other patents pending



**Note:** If available, prices vary with options.