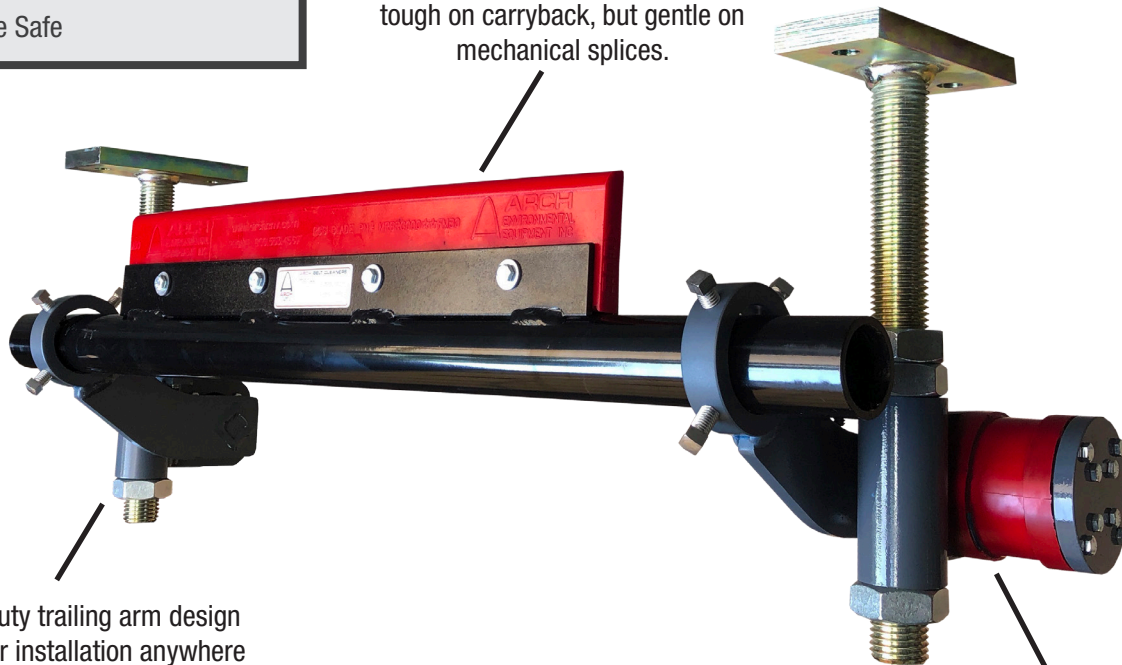


# RGS SECONDARY® BELT CLEANER

- ✓ Simple Installation
- ✓ Low Maintenance
- ✓ Metal Blade
- ✓ Fast Delivery
- ✓ Splice Safe

Tungston carbide blade molded into polyurethane compound is extremely tough on carryback, but gentle on mechanical splices.



Heavy-duty trailing arm design allows for installation anywhere along return belt line.

Twister mount maintains optimum blade pressure for the life of the blade.



- *Twister Mount* maintains constant blade-to-belt pressure.
- Constant re-tensioning not required.
- Heavy-duty trailing arm frame
- 1 ½ inch spindles that allow for easy height adjustment.
- Eliminates carryback before it damages your belts and idlers.
- Vertical installation is ideal for narrow spaces.



## WHO IS ARCH ENVIRONMENTAL?

Manufacturer and worldwide distributor of preferred bulk conveyor components since 1975.



800.553.4567 [www.archenv.com](http://www.archenv.com)

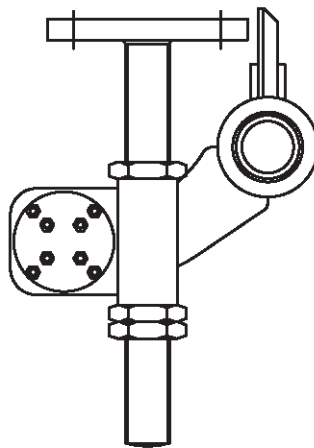
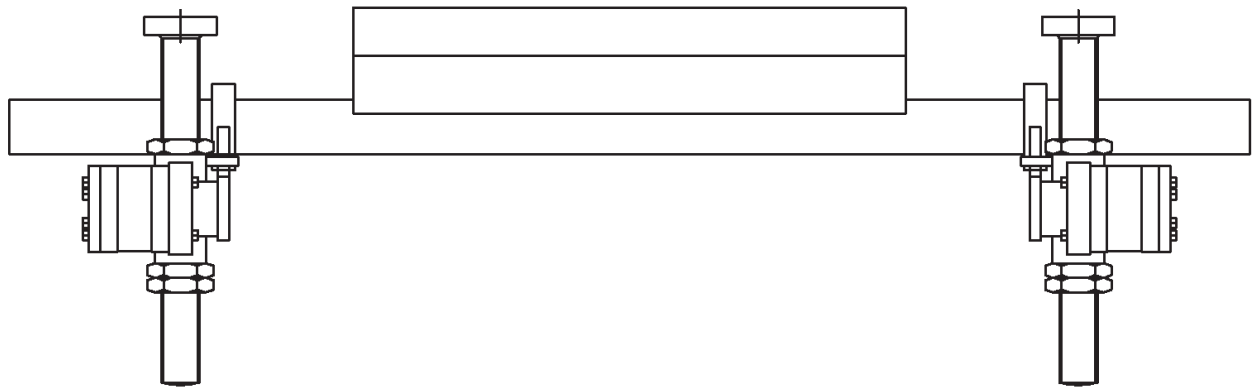
## MECHANICAL DIVISION

Belt Cleaners • Belt Alignment • Sealing Systems  
Dust Control Systems • Impact/Slider Systems

## ELECTRICAL DIVISION

Belt Scales • Metal Detectors • Pull Cord Switches  
Belt Protection Devices • Conveyor Control Systems

# RGS SECONDARY<sup>®</sup> BELT CLEANER



Covered under one or more of the following patents:  
4,202,437;4,231,471;4,436,446;4,489,823;4,533,036;4,779,716;4,877,125;  
4,989,727;5,149,305;5,222,588;5,222,589;5,219,063;5,350,053;5,725,083  
other patents pending



**Note:** If available, prices vary with options.