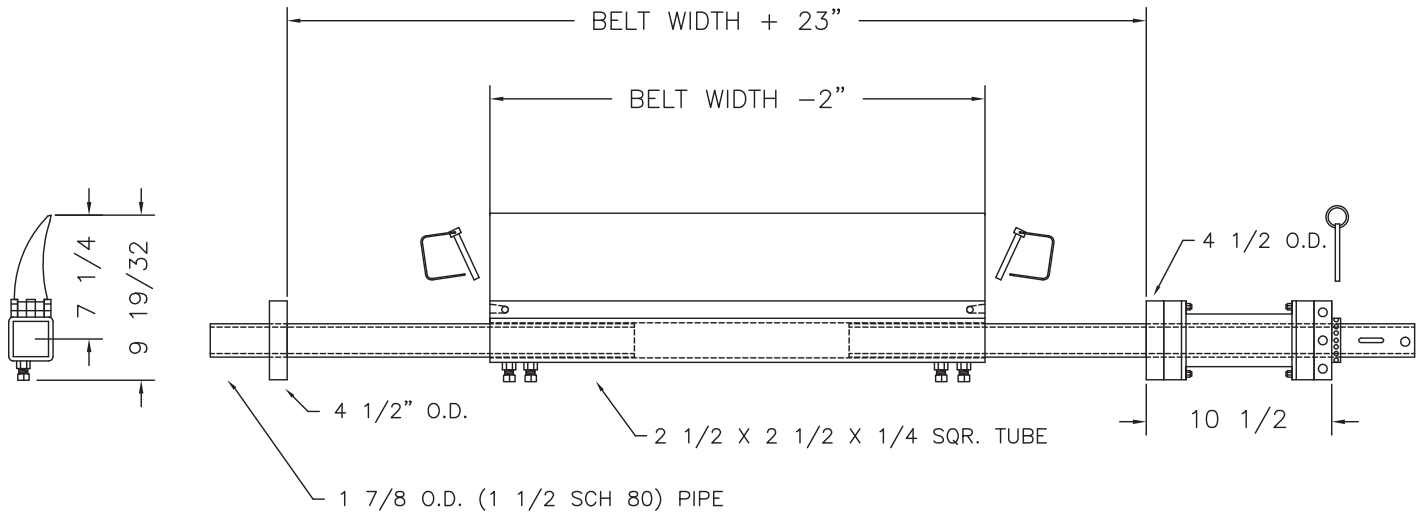


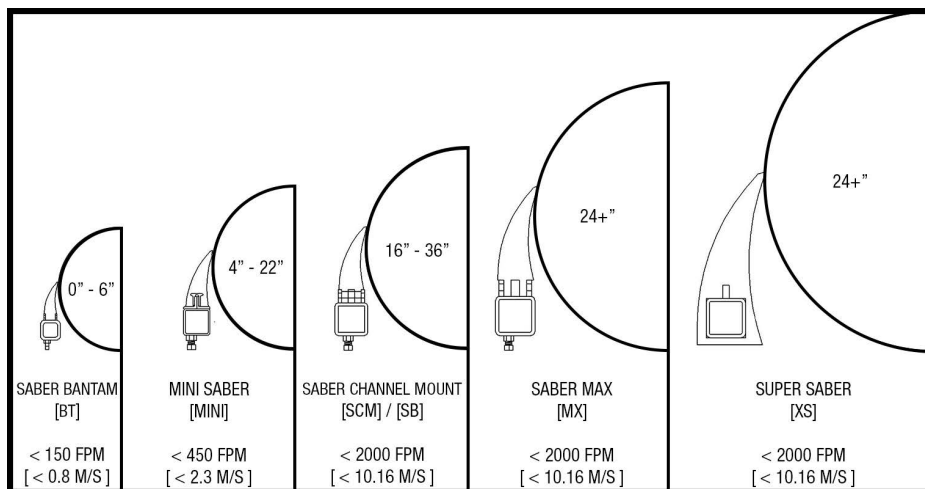
SABER CHANNEL MOUNT® (SCM) PRIMARY CLEANER



NOTE: IF LONGER SPAN IS REQUIRED, A LONGER MAINFRAME WILL BE REQUIRED (CONSULT THE FACTORY FOR DETAILS)

AVAILABLE OPTIONS: STAINLESS STEEL PIPES
STAINLESS STEEL FRAME
HEAVY PIPES (SCH. 160)
GREASE FITTINGS

(This chart shows most popular Arch Blade Compounds, please note not all compounds may be appropriate for every cleaner model, please contact factory with any questions regarding compound compatibility.)



Covered under one or more of the following patents:
4,202,437;4,231,471;4,436,446;4,489,823;4,533,036;4,779,716;4,877,125;
4,989,727;5,149,305;5,222,588;5,222,589;5,219,063;5,350,053;5,725,083
other patents pending



Note: If available, prices vary with options.