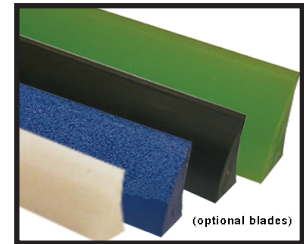


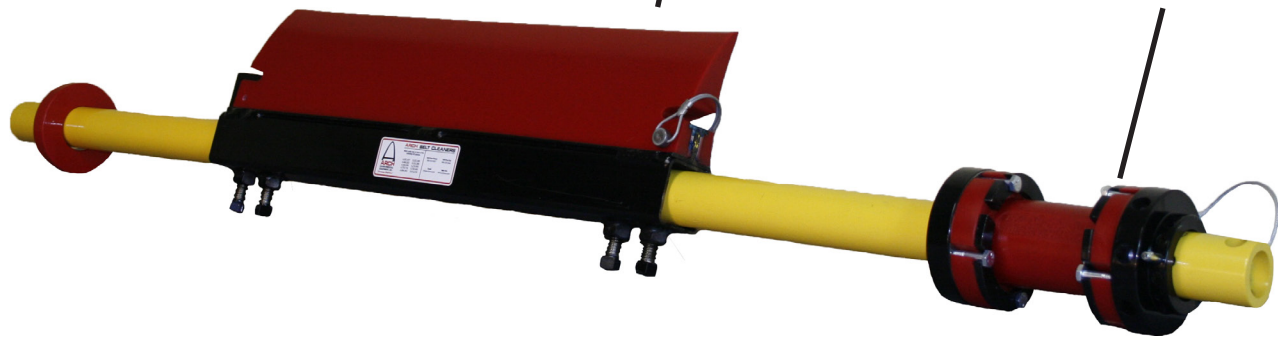
# MINI SABER® BELT CLEANER

- ✓ Simple Installation
- ✓ Low Maintenance
- ✓ Fast Delivery



Non-segmented polyurethane blade self-sharpens and is safe for mechanical splices.

Mini Twister Tensioner maintains constant blade-to-belt-pressure for optimum cleaning performance.



Optional blades available for your specific needs, including food-grade (FG), high-speed ceramic (C), extra high-temperature (XHT), and high-moisture (GB).



- Patented *Mini Twister Tensioner*® maintains consistent blade-to-belt pressure and its core is GUARANTEED FOR LIFE!
- Designed for head pulleys 22" and smaller.
- Ideal for belts up to 48".
- Single-pin removal makes blade replacement a one-minute process.
- *Mini Twister Tensioner*® eliminates time and money consuming manual adjustments.
- Curved blade reduces conveyor wear-and-tear by eliminating harmful carryback at the head pulley.



## WHO IS ARCH ENVIRONMENTAL?

Manufacturer and worldwide distributor of preferred bulk conveyor components since 1975.



800.553.4567 [www.archenv.com](http://www.archenv.com)

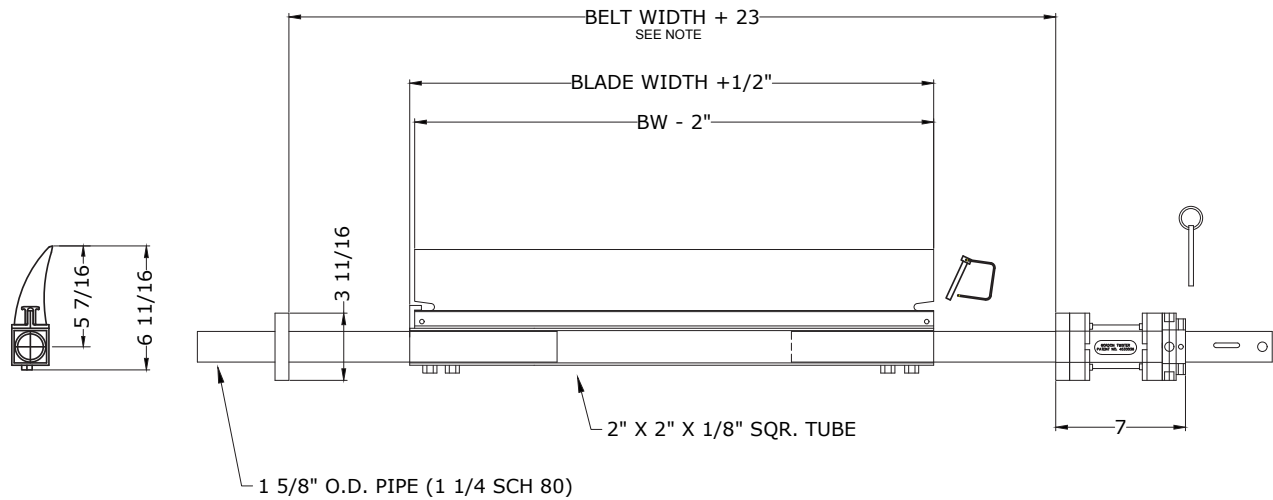
## MECHANICAL DIVISION

Belt Cleaners • Belt Alignment • Sealing Systems  
Dust Control Systems • Impact/Slider Systems

## ELECTRICAL DIVISION

Belt Scales • Metal Detectors • Pull Cord Switches  
Belt Protection Devices • Conveyor Control Systems

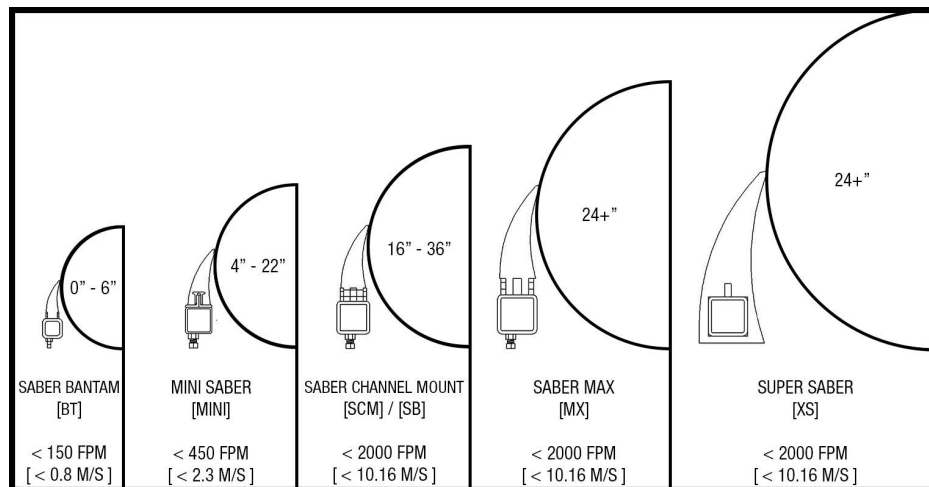
# MINI SABER® BELT CLEANER



NOTE: IF LONGER SPAN IS REQUIRED, A LONGER MAINFRAME WILL BE REQUIRED (CONSULT FACTORY FOR DETAILS)

<b>Standard Blades (RED)</b>	Temp Range: 180-220F
<b>High-Moisture Blades (GRAY)</b>	Temp Range: 180-220 F, 15%+ Moisture Content
<b>Ceramic Blades (BLUE)</b>	High Friction/High Speed, 750+ ft/min.
<b>High-Temperature / Chemical Blades (GREEN)</b>	Chemical Resistance, Temp Range: Up to 300F
<b>High-Wear / Frac Sand Blades (BLACK)</b>	High Friction/High Speed, Up to 300F
<b>Non-Pigment Blade (NATURAL)</b>	Same as Standard Red Blades. Ideal for color sensitive materials.
<b>Food Grade (WHITE)</b>	FDA approved for mild contact with food products.

(This chart shows most popular Arch Blade Compounds, please note not all compounds may be appropriate for every cleaner model, please contact factory with any questions regarding compound compatibility.)



Covered under one or more of the following patents:  
 4,202,437;4,231,471;4,436,446;4,489,823;4,533,036;4,779,716;4,877,125;  
 4,989,727;5,149,305;5,222,588;5,222,589;5,219,063;5,350,053;5,725,083  
 other patents pending



Note: If available, prices vary with options.