

Arch Environmental Equipment, Inc.
CAM-A-LOT Skirt Clamp

INSTALLATION INSTRUCTIONS

Cam-A-Lot Skirt Clamps are very easy to install and requires little manpower and tools.

TOOLS REQUIRED:

Welder

Measuring Rule or Tape

Marking Device or Chalk Line

**SHUT DOWN AND LOCKOUT CONVEYOR BEFORE
PERFORMING ANY MAINTENANCE**

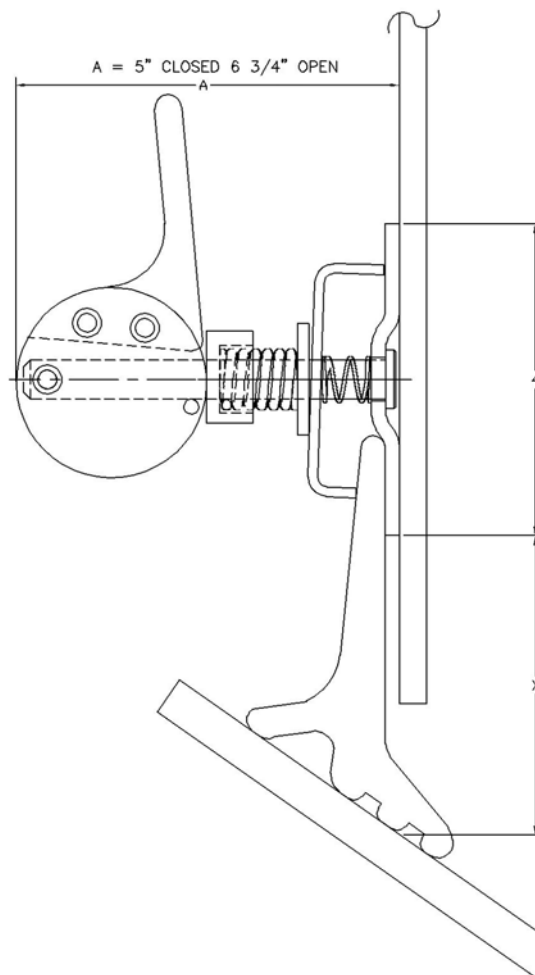


Figure 1

SITE PREPARATION

Since the Cam-A-Lot Skirt Clamps are mounted to the existing chute wall, some pre-installation site preparation is required. First, inspect the existing chute wall to ensure it is structurally sound and is strong enough to support the Cam-A-Lot System. Check the conveyor chute wall and measure to ensure there is a gap of $\frac{3}{4}$ "-2" between the belt and the chute wall. This dimension is critical to proper operation of the Cam-A-Lot Skirt Clamp. If the gap is less than $\frac{3}{4}$ ", the chute wall must be altered to meet this requirement. If the gap is larger than 2" a plate must be welded to the existing chute wall.

Also check for any obstructions on the chute wall that may interfere with the operation of the cam clamp. Keep in mind the cam can be rotated to any angle and still work properly. See figure 2.

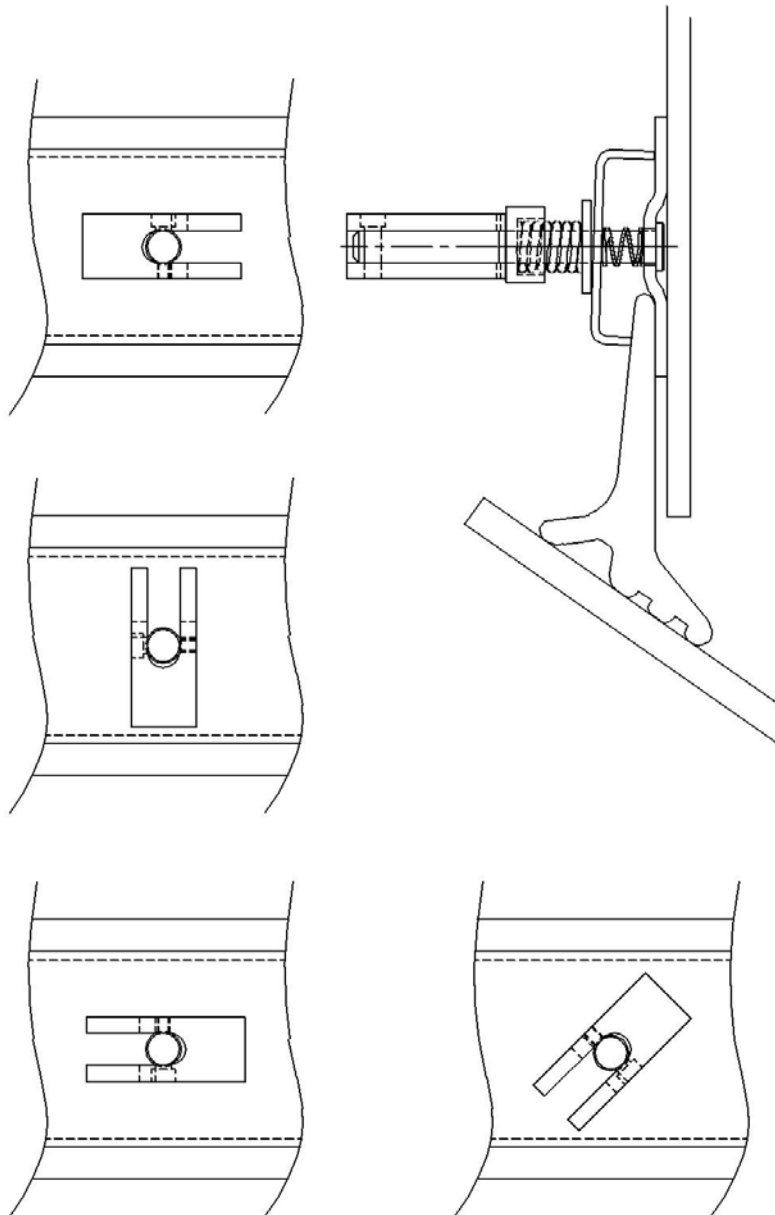


Figure 2

CAM-A-LOT SKIRT CLAMP MOUNTING

The Cam-A-Lot Skirt Clamps are very easy to mount. The mounting dimension will vary depending on the type of rubber being used. If the application calls for vertical rubber that will simply go straight down to the belt, take the width of the skirting you are using and subtract 1". This will give the "X" dimension shown in Figure 1.

Arch Environmental standard Talon Seal, the "X" dimension will be 3 7/8".

Arch Environmental tall Talon Seal, the "X" dimension will be 5 7/8".

If using another brand of skirting you will need to identify how it addresses the belt surface and determine your "X" dimension on your own. It is recommended that approximately 1" of skirting rubber be under the clamp bar of the Cam-A-Lot skirt clamp. If you have a drawing of your skirting and need assistance consult the factory at 800-553-4567.

Using a chalk line or some other marking device, mark the chute wall at dimension "X" along the entire length where the skirting will be mounted. This series of lines or marks will be bottom edge of the Cam-A-Lot Skirt Clamp assembly.

Once the chute wall has been marked, the Cam-A-Lot Skirt Clamps are ready to be mounted.. Place the holder against the chute wall and ensure the bottom edge of the backing plate is parallel and even with the line previously marked on the chute wall. Now, tack-weld the Cam-A-Lot Clamp in place. Continue to do this along the entire area to be sealed. Ensure that each holder is parallel with the belt and the line marked. Tack welds will be required on top and bottom.

Pull the safety pin and release the cam so the clamping bar opens. Check to ensure the Cam and Clamping pin spin freely in the backer place. Now insert your skirting for test fit. There should be approximately 1" of skirt rubber in the clamp. If the skirting addresses the belt as desired and the clamp is holding the skirting effectively, the Cam-A-Lot Skirt Clamps can now be fully welded in place. It is recommended that a minimum of a 1" weld be applied to the top and bottom of the backer plate at each pin location. There should be an additional minimum 1" weld at the midpoint between each pin (see figure 3). If installing multiple clamp sections, ensure the end-to-end joints are welded as well.

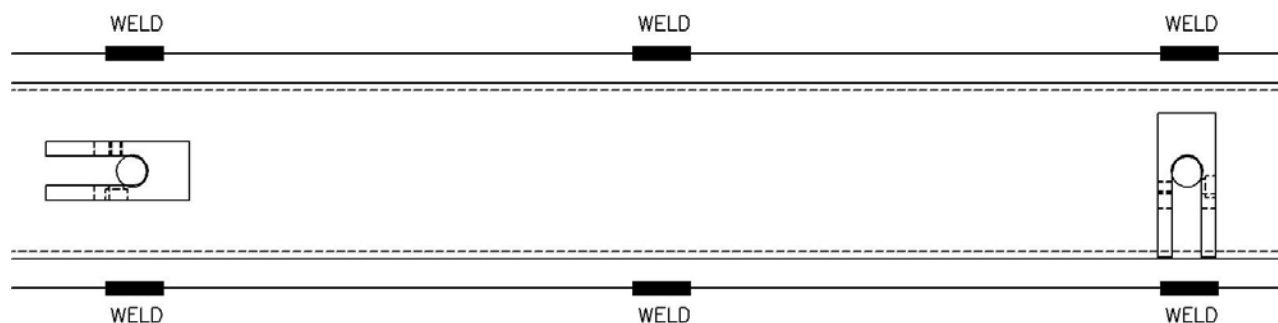


Figure 3

Once the welds have cooled fully install the skirting and apply each cam clamp on the Cam-A-Lot system. Ensure the safety pin is in place after activating the clamp.

The Cam-A-Lot system is now ready to be test run. Once the test run is complete make any adjustments needed.

If you have any questions or comments, please call 1-800-553-4567.

CONVEYOR EFFICIENCY SPECIALISTS



P.O. Box 1760 5929 Benton Road Paducah, KY 42002-1760
800-553-4567 / 270-898-6821 Fax: 800-230-9462 / 270-898-8061
<http://www.aeec.com>

Gordon Belt Cleaning Systems • Tri-Return Training Idler • Wyatt Alignment Disks • Simplicity Access Doors • Gordon "At-Last-A-Seal" Skirt Rubber
Flexiskirt Sealing System • Gordon Dust Seal • Simplicity Slider System • Dust Shark Dust Suppression System • Simplicity Chute Liner • Fogger System
Simplicity Impact System • Conveyor Controls & Belt Protection Equipment • ArchWeigh Belt Scales • Metasearch Metal Detector