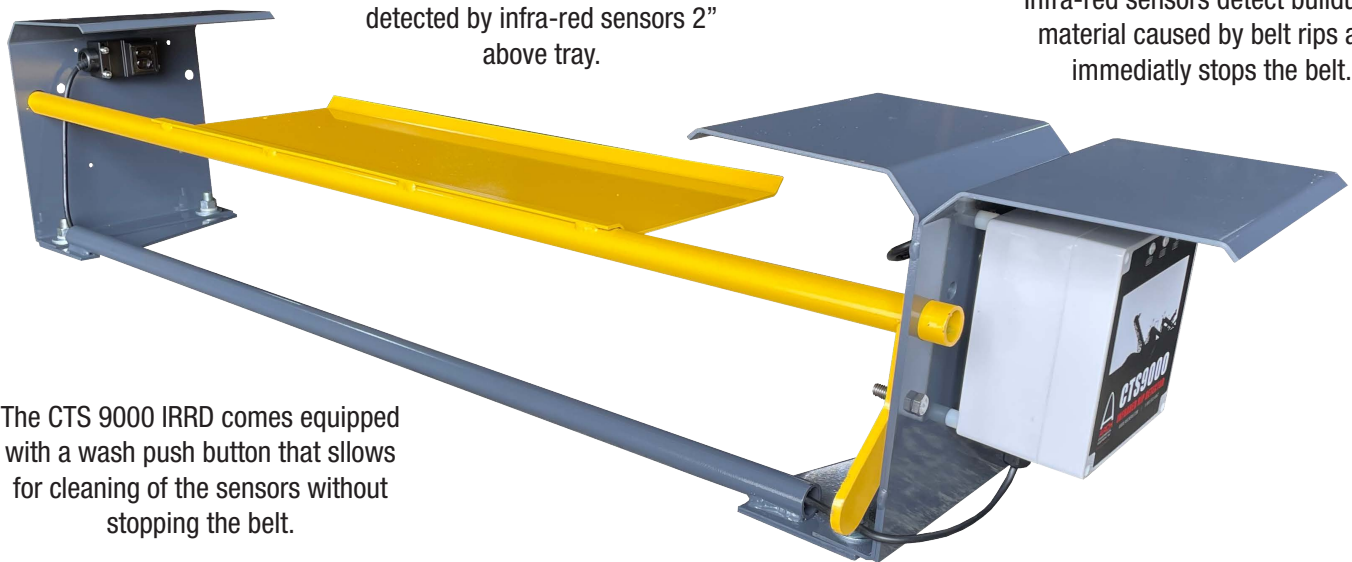


# CTS 9000 IRRD<sup>®</sup> INFRARED RIP DETECTOR

- ✓ Simple Installation
- ✓ Low Maintenance
- ✓ Corrosion Resistant
- ✓ Fast Delivery
- ✓ Worksheet Required

Collection tray accumulates material that falls through a belt tear until detected by infra-red sensors 2" above tray.

Infra-red sensors detect buildup of material caused by belt rips and immediately stops the belt.



The CTS 9000 IRRD comes equipped with a wash push button that allows for cleaning of the sensors without stopping the belt.

- Detects minimal spillage caused by cuts, splices and tears before belt is irreparately damaged.
- Auto-wash mechanism minimizes downtime by allowing operators to clean the unit without stopping the belt.
- Custom built to your specifications.
- The switch consists of one normally open and one normally closed contact.
- Other features include: I.P. 66 Enclosure, High Impact Polycarbonate Housing, & 120 VAC Power Requirements.



## WHO IS ARCH ENVIRONMENTAL?

Manufacturer and worldwide distributor of preferred bulk conveyor components since 1975.



800.553.4567 [www.archenv.com](http://www.archenv.com)

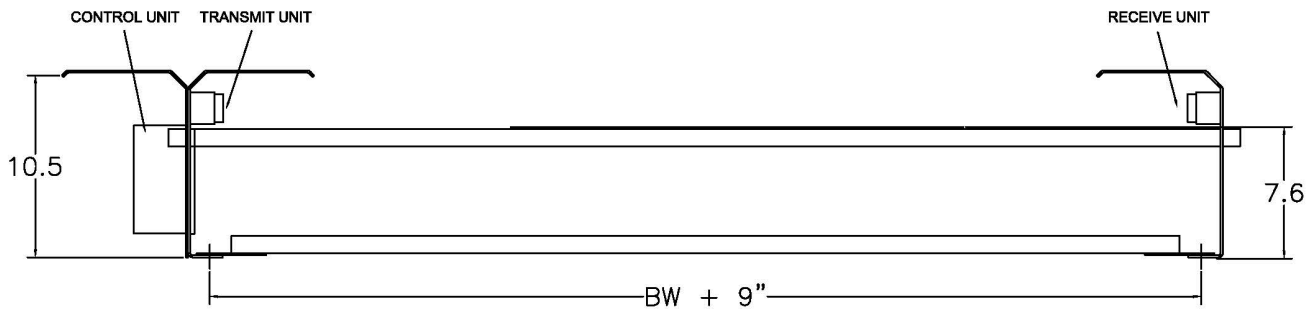
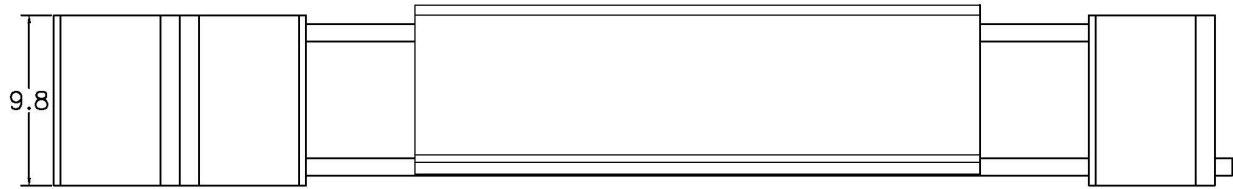
## MECHANICAL DIVISION

Belt Cleaners • Belt Alignment • Sealing Systems  
Dust Control Systems • Impact/Slider Systems

## ELECTRICAL DIVISION

Belt Scales • Metal Detectors • Pull Cord Switches  
Belt Protection Devices • Conveyor Control Systems

# CTS 9000 IRRD<sup>®</sup> INFRARED RIP DETECTOR



Covered under one or more of the following patents:  
4,202,437;4,231,471;4,436,446;4,489,823;4,533,036;4,779,716;4,877,125;  
4,989,727;5,149,305;5,222,588;5,222,589;5,219,063;5,350,053;5,725,083  
other patents pending



**Note:** If available, prices vary with options.