

SABER® ECONO-MINI PRIMARY CLEANER

- ✓ Cost Effective
- ✓ Simple Installation
- ✓ Low Maintenance
- ✓ Fast Delivery

Arch's patented Twister Tensioner maintains the perfect blade pressure, making it virtually maintenance-free.

The Saber Blade maintains an efficient cleaning edge to eliminate harmful carryback before it can do any harm.



Saber® Econo-Mini Cleaner has no main-frame making it a cost effective solution to keeping your belt clean.

SABER® MINI OEM IS INTENDED FOR PULLEYS LESS THAN 16" IN DIAMETER.

- Patented *Twister Tensioner*® maintains consistent blade-to-belt pressure and its core is GUARANTEED FOR LIFE!
- Compact 5" x 5" bolt-on mounting plates.
- Curved blade is safe on all mechanical splices.
- Minimizes safety hazards, conveyor wear-and-tear, and costly cleanup by eliminating carryback.
- No need for constant re-tensioning.
- Multiple blade options include high temperature, high moisture, and food grade.



WHO IS ARCH ENVIRONMENTAL?

Manufacturer and worldwide distributor of preferred bulk conveyor components since 1975.



800.553.4567 www.archenv.com

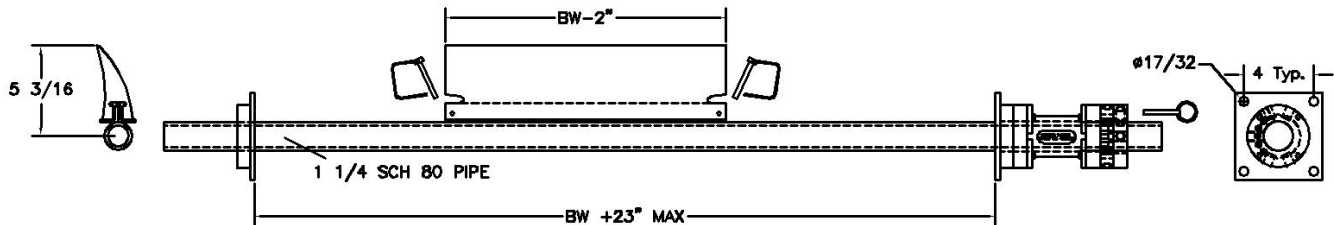
MECHANICAL DIVISION

Belt Cleaners • Belt Alignment • Sealing Systems
Dust Control Systems • Impact/Slider Systems

ELECTRICAL DIVISION

Belt Scales • Metal Detectors • Pull Cord Switches
Belt Protection Devices • Conveyor Control Systems

SABER® ECONO-MINI PRIMARY CLEANER



Standard Blades (RED)

Temp Range: 180-220 F

High-Moisture Blades (GRAY)

Temp Range: 180-220 F

15%+ Moisture Content

Cermic Blades (BLUE)

High Friction/High Speed

750+ ft/min.

High Temperature Blades (GREEN)

Temp Range: Up to 300 F

Non-Pigment Blade (NATURAL)

Same as Standard Red Blades

Ideal for color sensitive materials

Food Grade (WHITE)

FDA approved for mild contact

with food products.

Covered under one or more of the following patents:
4,202,437;4,231,471;4,436,446;4,489,823;4,533,036;4,779,716;4,877,125;
4,989,727;5,149,305;5,222,588;5,222,589;5,219,063;5,350,053;5,725,083
other patents pending



Note: If available, prices vary with options.