

SIMPLICITY® V-PLOW

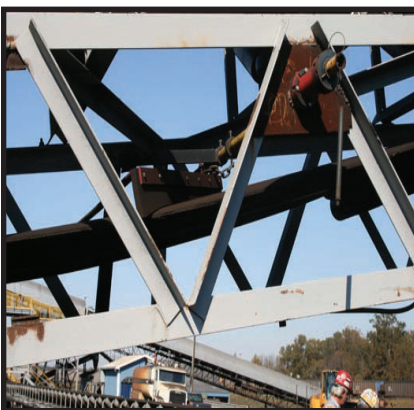
- ✓ Simple Installation
- ✓ Low Maintenance
- ✓ Splice Safe
- ✓ Return Belt Cleaning
- ✓ Fast Delivery

Heavy-duty cantilever arms provide easy installation anywhere along return belt.



60 durometer rubber, standard on all V-Plows. Blade is designed to discharge material off both sides of the belt.

Patented Twister Tensioner assures constant blade pressure without constant re-tensioning.



- Patented *Twister Tensioner*® maintains consistent blade-to-belt pressure and its core is GUARANTEED FOR LIFE!
- Prevents premature component wear caused by material buildup on the return side of the belt.
- Eliminates uneven buildup on the tail pulley that leads to belt misalignment.
- Reduces downtime and labor costs with quick installation and minimal maintenance.
- V-Plow discharges material off both sides of the belt while the Angle Plow removes it to one side.
- Standard Blades: V-Plow - black rubber & Angle Plow - red polyurethane.
- Other available blade options are white, non-pigmented urethane (W), and extra high temperature green (XHT).



WHO IS ARCH ENVIRONMENTAL?

Manufacturer and worldwide distributor of preferred bulk conveyor components since 1975.



800.553.4567 www.archenv.com

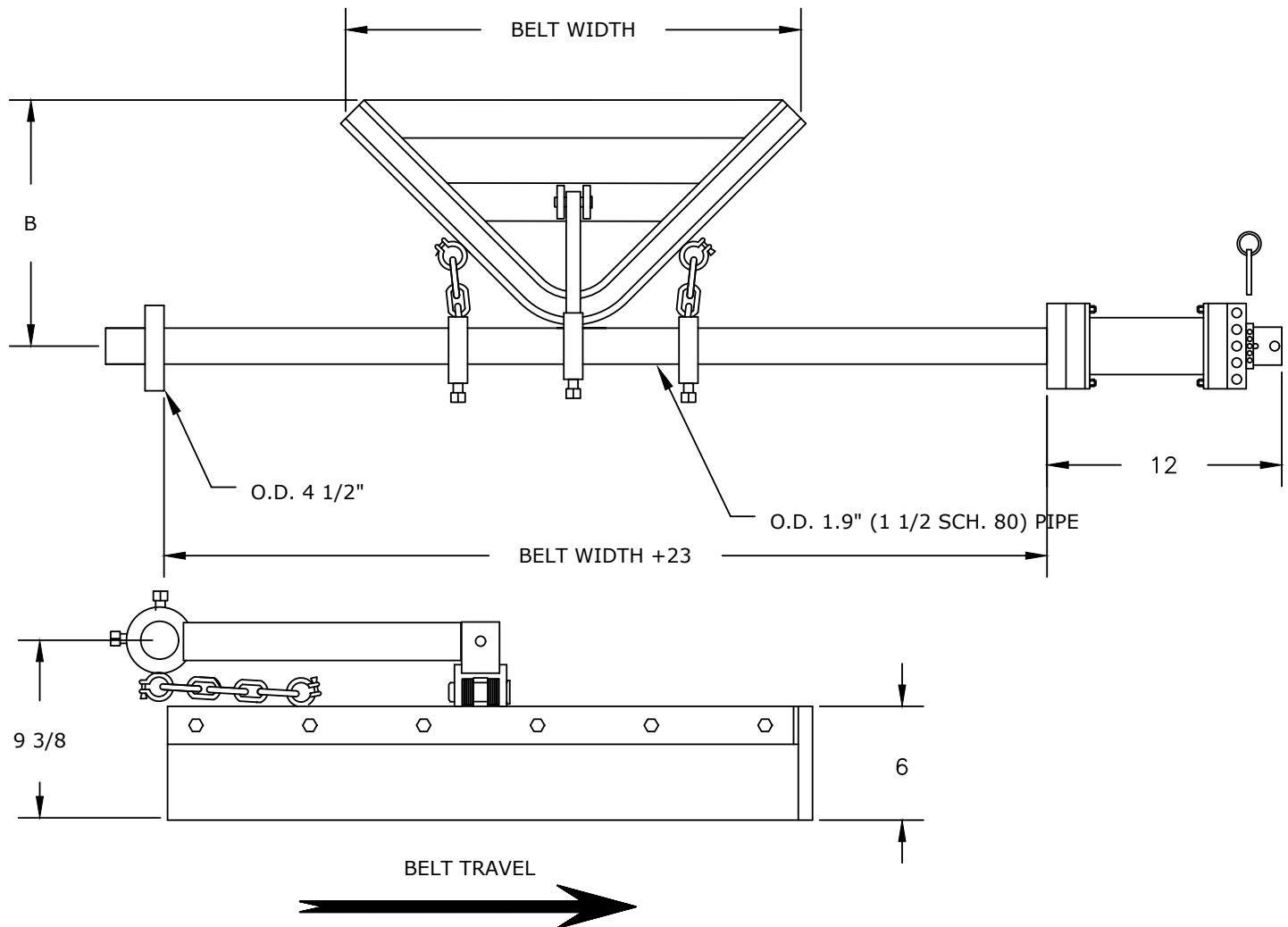
MECHANICAL DIVISION

Belt Cleaners • Belt Alignment • Sealing Systems
Dust Control Systems • Impact/Slider Systems

ELECTRICAL DIVISION

Belt Scales • Metal Detectors • Pull Cord Switches
Belt Protection Devices • Conveyor Control Systems

SIMPLICITY[®] V-PLOW



High Temperature Blades (GREEN)

Temp Range: Up to 300 F

Non-Pigment Blade (WHITE)

Same as Standard Red Blades
 Ideal for color sensitive materials
 (ie. Borax, Soap, etc.)

Covered under one or more of the following patents:
 4,202,437;4,231,471;4,436,446;4,489,823;4,533,036;4,779,716;4,877,125;
 4,989,727;5,149,305;5,222,588;5,222,589;5,219,063;5,350,053;5,725,083
 other patents pending



Note: If available, prices vary with options.