

SIMPLICITY CHUTE BAFFLE®

- ✓ Simple Installation
- ✓ Low Maintenance
- ✓ Corrosion Resistant
- ✓ Fast Delivery

Baffle cartridges easily removed from chute with wrench.



Double layer of wear-resistant polyurethane traps and contains particles in transfer points.



- Stops high-velocity dust at transfer points.
- Made with wear-resistant polyurethane.
- Overlapping design provides double the protection against harmful fugitive dust.
- Grass skirting between urethane layers gives you extra layers to fill gaps.
- Custom-manufactured according to your width needs.
- 2' long baffles of 1/4" polyurethane. Also available for heavy-duty applications (3/4" thick X 4' long). Made to order on width.
- Also available in 4' lengths for larger openings.
- Can be installed anywhere along conveyor.



WHO IS ARCH ENVIRONMENTAL?

Manufacturer and worldwide distributor of preferred bulk conveyor components since 1975.



800.553.4567 www.archenv.com

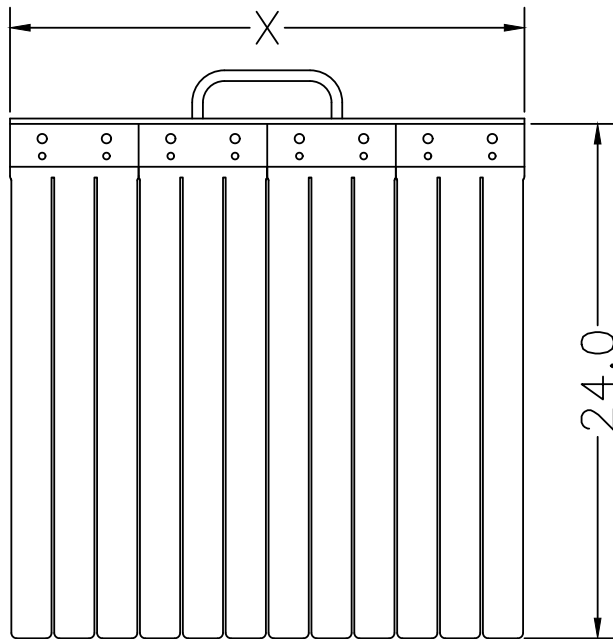
MECHANICAL DIVISION

Belt Cleaners • Belt Alignment • Sealing Systems
Dust Control Systems • Impact/Slider Systems

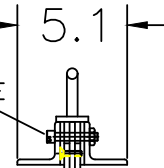
ELECTRICAL DIVISION

Belt Scales • Metal Detectors • Pull Cord Switches
Belt Protection Devices • Conveyor Control Systems

SIMPLICITY CHUTE BAFFLE®

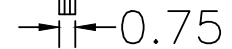


REMOVAL OF THESE BOLTS ALLOW Baffle CARTRIDGE TO BE REMOVED FROM CHUTE



URETHANE STRIP CURTAIN ON BOTH SIDES

GRASS SKIRTING IN THE BETWEEN THE URETHANE TO FILL GAPS BETWEEN STRIPS.



CHUTE BAFFLES ARE MADE TO ORDER BASED ON WIDTH REQUIRED FOR THE APPLICATION. WHEN ORDERING PLEASE SPECIFY DIMENSION "X" IN THE DIAGRAM ABOVE

Covered under one or more of the following patents:
4,202,437;4,231,471;4,436,446;4,489,823;4,533,036;4,779,716;4,877,125;
4,989,727;5,149,305;5,222,588;5,222,589;5,219,063;5,350,053;5,725,083
other patents pending



Note: If available, prices vary with options.