



TRI-RETURN TRAINING IDLER

[INSTALLATION INSTRUCTIONS]

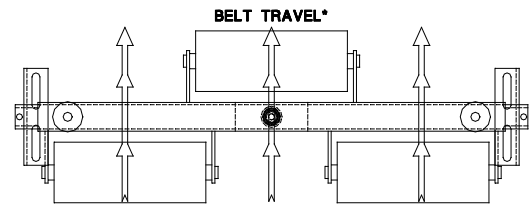
SHUT DOWN AND LOCKOUT CONVEYOR BEFORE PERFORMING ANY MAINTENANCE

Tips for selecting the mounting location of the Tri-Return:

- If installing near the tail pulley, be sure there is at least one standard return idler between the Tri-Return and the tail pulley.
- If installing in the middle of the conveyor system, the Tri-Return should be located prior to the point of worse deflection.

STEP 1

Once you have determined the location where the Tri-Return will be installed, you must remove the existing return idler.

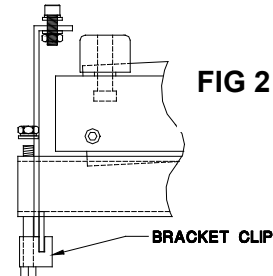
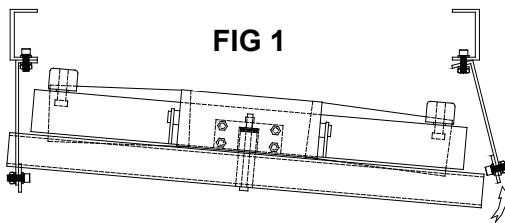


STEP 2

After the old idler is removed, you must mount the hanger brackets. Ensure the cross bar on the bracket is mounted in the same set of adjustment holes on each bracket. For now, thread the nuts on the bracket bolts (not included 1/2" or 5/8" acceptable) the depth of the nut.

STEP 3

Now insert one end of the Tri-Return assembly into the hanger bracket. You must now lift the opposite end and insert it into the opposite side hanger bracket. (See Fig 1) [Note: The Heavy-Duty trainer mounts in the same manner, except there are not clips. The HD bolts directly to the bracket]



STEP 4

At this point, completely tighten the mounting bolts in the hanger brackets.

STEP 5

Ensure the trainer is level and then install the bracket clips & bolts. Be sure the threaded end of the bolt is pointed upward. Now completely tighten the nut on the bolt. (See Fig 2)

STEP 6

Before starting up, inspect the installation to be sure that the Tri-Return is completely supporting the belt. You should not be able to see light between the belt and the Tri-Return rolls.

Note: Tri-Return Training Idlers are equally effective on reversing belts.

If there are any questions or comments, please contact Arch at 1.800.553.4567.

THANK YOU FOR USING ARCH PRODUCTS!