



ADJUSTABLE LUG MOUNT

RGS-SCP-GSS-SC MODELS [INSTALLATION INSTRUCTIONS]

THE TOOLS & RESOURCES REQUIRED ARE:

- | | |
|------------------|--------------------------|
| 1. TAPE MEASURE | 5. ADJUSTABLE WRENCH |
| 2. SQUARE | 6. WELDING EQUIPMENT |
| 3. CUTTING TORCH | 7. CHALK |
| 4. LEVEL | 8. 4 – ½" MOUNTING BOLTS |

SHUT DOWN AND LOCKOUT CONVEYOR BEFORE PERFORMING ANY MAINTENANCE

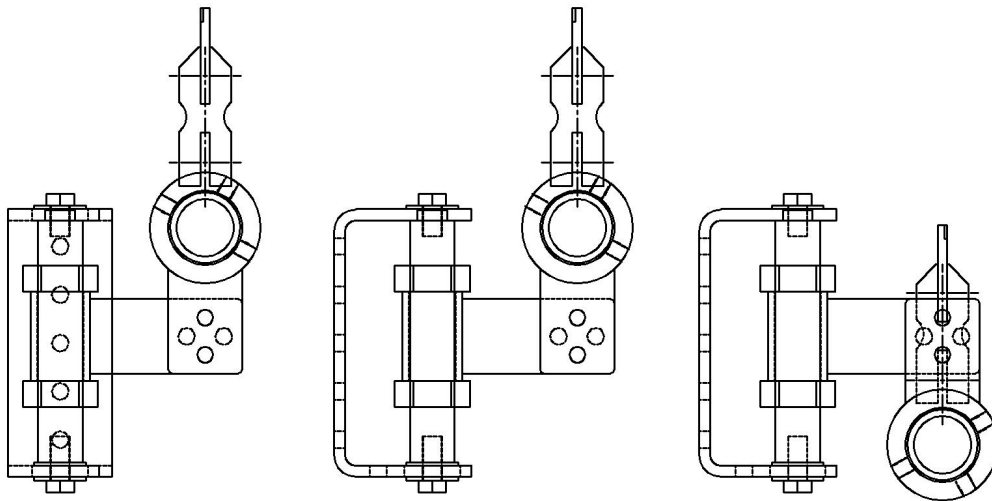


FIG 1

These are general installation instructions for Arch Environmental Equipment Adjustable Lug mounted cleaners. Since Arch offers multiple pipe diameter and blade options on our secondary cleaners, the installer should have the cleaner on-site or refer to an assembly drawing for dimensions they may require for proper installation. The adjustable lug can also be assembled in different configurations (figure 1). Keep in mind, these instructions cannot cover every scenario the installer may encounter in the field. Consult the factory if needed.

STEP 1

Locate approximate mounting location and ensure blade will contact the belt approximately 3"-4" from the point where the belt leaves the pulley (figure 2). Measure the cleaner on-site or refer to assembly drawing and prepare cutouts on both sides of chute. The size of these cutouts may be limited due to construction of conveyor frame and/or chute. It is preferred that the opening be large enough to slide the blade-frame assembly (item 2) through the cut out and still allow for adjustment during final setup.. If additional mounting brackets are required they are to be designed and fabricated by the installer based on application requirements. The bracket location should be marked on both sides of conveyor structure (chute, ect). The bracket (item 1) **MUST** be parallel to the conveyor belt line. Tack weld or loosely bolt bracket in place use minimum 1/2" size bolts.

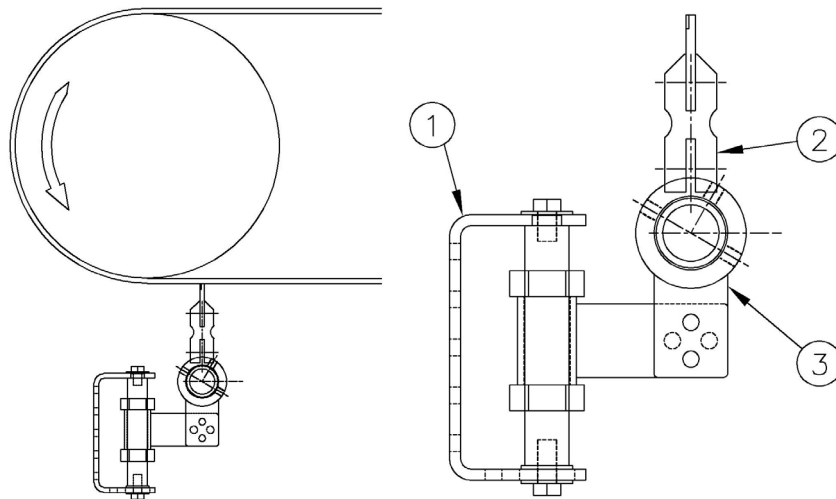


FIG 2

STEP 2

Once both the brackets (item 1) are confirmed to be parallel to the belt surface, Slide the Blade and Frame assembly (item 2) into chute so that pipe extended thru the bracket lug (item 3) on the far side. Continue to slide the frame into the chute until it is slightly past the near side bracket assembly and can be pulled back into the near side bracket lug.

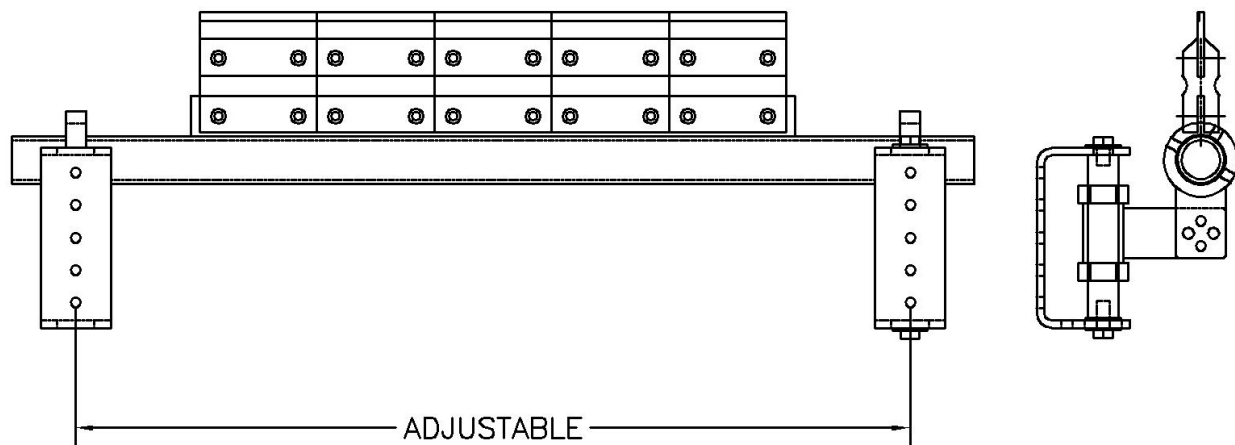


FIG 3

STEP 3

If using an SC, GSS, SCP, or RGS style cleaner, rotate the frame so that the blade is in a perpendicular position to the belt. Tighten the setscrews on the bracket lug to prevent the frame from rotating any further. Complete welding or tightening of bolts brackets.

STEP 4

Adjust the upper and lower jam nuts on each bracket spindle until the blade touches the belt. Now ensure the upper jam nut is loose and adjust the lower Jam Nut upward until the blade make full contact with the belt surface and you see no gaps between the blade and belt.

STEP 5

Check the location of the blade in relation to the width of the belt. Your blade should be centrally located along the width. If it is not, loosen the setscrews on the bracket lugs and slide Frame sideways as needed.

STEP 6

To apply tension to the blade, loosen the upper jam nut to allow the lug to move freely up and down. Now rotate the lower jam nut to move the lug and blade assembly up against the belt. Ensure the blade makes full contact with the belt surface and you see no gaps between the blade and belt. If you run out of adjustment on the spindle, then you may need to relocate your mounting bracket and restart from step one.

RECOMMENDED BLADE POSITION

CHECKLIST

- 1) Spindle Brackets are installed at 90° to the belt surface.
- 2) The Scraper Unit is parallel to the belt.
- 3) The Tip of the blade is approximately 3"-4" from the point where the belt leaves the pulley.
- 4) In Installations where there is no snub drum, the first return roller should be installed approximately 40" from the center of the head drum. This will ensure that the belt is sufficiently supported.

START-UP OF THE BELT

- 1) Unlock the conveyor.
- 2) Perform a test run of the belt (with and without material).
 - a. Check the belt tracking.
 - b. Installation is complete.

Note: If cleaning efficiency is not being achieved adjust spindle jam nuts to raise the frame assembly until correct cleaning efficiency is achieved.

If there are any questions or comments, please contact Arch at 1.800.553.4567.

THANK YOU FOR USING ARCH PRODUCTS!